



# Powerware

## Powerware® Environmental Rack Monitor

Product Focus

A full-featured yet cost-effective solution for remotely monitoring environmental conditions in your data center



### Product Snapshot

**Measure** ambient temperature and humidity at the rack level.

**Monitor** the status of up to four additional contact devices/sensors.

**Display** real-time and historical status of all sensors via the intranet or Internet.

**Stay informed** of alarms via email, PDA and pager.

**Act** before problems affect sensitive equipment.

**Aggregate real-time information** from up to 100 Environmental Rack Monitors in a single Web page.

### Features

- Monitors temperature and humidity at two locations in a rack and the status of up to four additional input contact sensor devices
- Protects critical assets from heat, humidity, smoke, water leaks or intrusion
- Displays real-time status to a PC, Internet-ready wireless device or Network Management System (NMS) software
- Automatically notifies designated recipients of out-of-range conditions
- Simplifies operations with an intuitive, Web browser interface, rich graphing of data, auto-discovery and auto-aggregation utilities, and more
- Five power supplies available (US/UK/Asia/Australia/IEC C13/C14)
- 1-year warranty

Yesterday's racks of equipment typically consumed less than 5 kW of power, but new blade servers can push that requirement four times higher in a single rack—up to 20 kW per rack. The heat rejected by these high-intensity servers is expected to double in the next 10 years. Even as IT environments are getting hotter, racks and equipment rooms are more tightly packed than ever, leaving less open space for air circulation.

The result is unbalanced airflow and undesirable hot spots in and around sensitive equip-

ment, which can be disastrous from a server's point of view. It has been found that heat-related issues are to blame for 60 percent of hardware downtime.

Other environmental threats—such as humidity, water leaks, smoke and cabinet intrusion—can be equally harmful to the mission critical data center environment. If the rack environment isn't supervised at the equipment level, 24/7, how would you know?

# Introducing the Powerware Environmental Rack Monitor

## Around-the-Clock Monitoring of Environmental Conditions at the Rack Level

The Powerware Environmental Rack Monitor (ERM) continuously monitors environmental conditions at the rack level, providing an extra level of security for critical assets. The primary application is for high-density data centers, but this compact, full-featured monitor can monitor conditions in laboratories, hospitals, warehouses, libraries, museums and any other indoor location where the environment must be maintained within acceptable levels.

In the typical rack application, the 0U-size rack monitor base unit can be placed horizontally or vertically in any unused space in the rack. This base unit supports up to two combination temperature and humidity sensor units (known as TH-Modules) that can be placed anywhere in the enclosure. Each hot-swappable TH-Module can support up to two additional input contact sensor devices, for a total of eight sensors per rack monitor. The standard package come with one TH-Module. Additional TH-Modules and sensors can be purchased separately. The ERM also supports third party contact sensors.

**View real-time environmental conditions at the equipment or asset level.**

### View real-time environmental conditions.

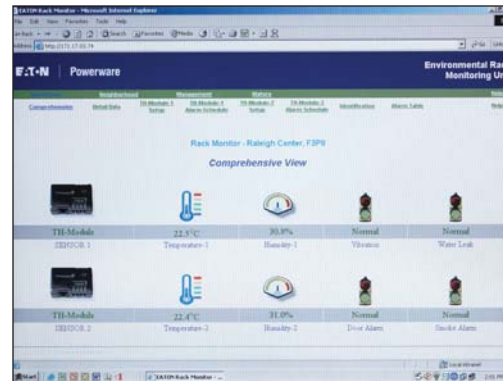
Simply point your Web browser to the IP address of the unit for a display of current status—temperature, humidity and the status of contact sensors. You can access this password-protected information from a PC or workstation, Internet-ready wireless device or SNMP management software.

### Use an intuitive, visual interface.

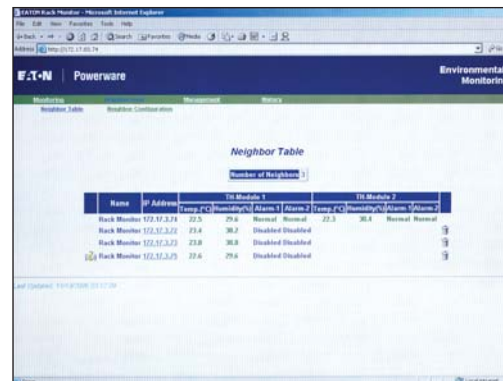
The monitor has a built-in Web server; no external software is required except a standard Web browser. A clean, user-friendly interface, coupled with context-sensitive online help, makes it easy to navigate and use system features.

### View the status of up to 100 racks on one screen—an Eaton exclusive.

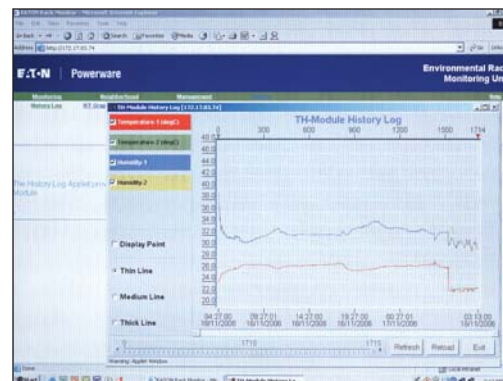
The Environmental Rack Monitor can automatically aggregate information from up to 100 monitors on a single Web page. A built-in, auto-discovery feature scans the network (or a range of IP addresses you specify), automatically finds other rack monitors in that domain, and displays their status in one table. This feature is not available on competitors' monitors.



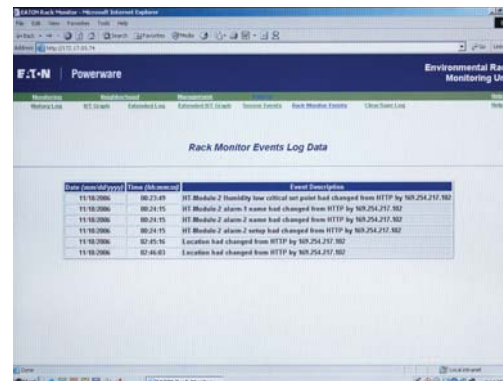
Displays real-time status to a PC, Internet-ready wireless device or Network Management System (NMS) software using SNMP traps. A MIB is provided.



Aggregates real-time information from up to 100 Environmental Rack Monitors in a single Web page.



Simplifies operations with an intuitive, Web browser interface, rich graphing of data, auto-discovery and auto-aggregation utilities, and more



Onboard flash memory to store historical data and event logs



OU device with its own Web server

### Get automated notification of out-of-range conditions.

When acceptable temperature or humidity limits are exceeded, or contact status changes, the monitor automatically logs the event; notifies key personnel by email, PCS digital phone or pager; and can send an SNMP trap to a Network Management System, such as HP OpenView or IBM Tivoli. A full MIB (Management Information Base) is provided.

### Install and activate quickly.

The Environmental Rack Monitor and TH-Modules are mounted in unused side or rear channels within rack enclosures, so they don't occupy any space needed for IT equipment. The unit has screw holes for wall-mounting and rubber feet for placement on any flat surface. The TH-Module also comes with a screw hole and matching screws. Device activation is simple and can be done remotely over the network or locally using the serial port.

### Assess trends over time.

Internal flash memory stores and retains historical environmental data even when the unit is powered off. A rich graphic interface displays historical trends and aids in troubleshooting. This data can be easily downloaded from the device for archiving and further analysis.

### Streamline administration with user-friendly utilities.

The unit comes with utilities to enable remote upgrade of firmware in multiple rack monitors in a single broadcast session, and discovery tools to search other rack monitors on the network. The unit can also be rebooted remotely.



AC Powered Smoke Detector with Battery Backup



Vibration Sensor



Water Leak Sensor



Door Open/Close Sensor

---

**Connect up to two humidity, two temperature and four input contact sensors per monitor for a very cost-effective rack solution. Display color graphs of heat/humidity trends, to identify areas for proactive action.**

---

## Count on reliable performance.

Powerware data center solutions, including the Environmental Rack Monitor, have been designed for the rigors of high-density computing environments. For instance, our TH-Module sensors are housed in a rugged protective casing and can be firmly affixed to a rack using its screw-mount hole. Competitors' offerings have flimsy, exposed sensors that hang loose and break easily.

To find out more about this product or other elements of Eaton's data center solutions—such as enclosures, power quality and backup power systems, and power distribution systems—visit our Web site at [www.powerware.com](http://www.powerware.com), or contact us at 1-800-753-9433.

Vibration Sensor on the outside of the enclosure

Door Open/Close Sensor on the outside of the enclosure



Smoke Detector placed on the inside top of the enclosure

Rack monitor on top of a CPU

Water Leak Sensor placed on the bottom inside of the enclosure

## Automatically display the status of up to 100 Rack Monitors in a single Web page.

UNITED STATES  
8609 Six Forks Road  
Raleigh, NC 27615 U.S.A.  
Toll Free: 1.800.356.5794  
or 919.872.3020

[www.powerware.com](http://www.powerware.com)

CANADA  
Ontario: 416.798.0112  
Toll Free: 1.800.461.9166

LATIN AMERICA  
Argentina: 54.11.4343.6323  
Brazil: 55.11.3616.8500  
México: 52.55.5488.5252

EUROPE/MIDDLE EAST/AFRICA  
Denmark: 45.3686.7910  
Finland: 358.94.52.661  
France: 33.1.6012.7400  
Germany: 49.7841.666.0  
Italy: 39.02.66.04.05.40  
Norway: 47.23.03.65.50  
Sweden: 46.8.598.940.00  
United Kingdom: 44.1753.608.700

ASIA PACIFIC  
Australia/NZ: 61.2.9693.9366  
China: 86.21.6361.5599  
HK/Korea/Taiwan: 852.2745.6682  
India: 91.11.2649.9414 to 18  
Singapore/SEA: 65.6825.1668

Powerware is a trademark of Eaton Electrical Inc.

**EATON**

**Powerware**

© 2007 Eaton Corporation  
All Rights Reserved  
Printed in USA  
ERM01FXA  
January 2007